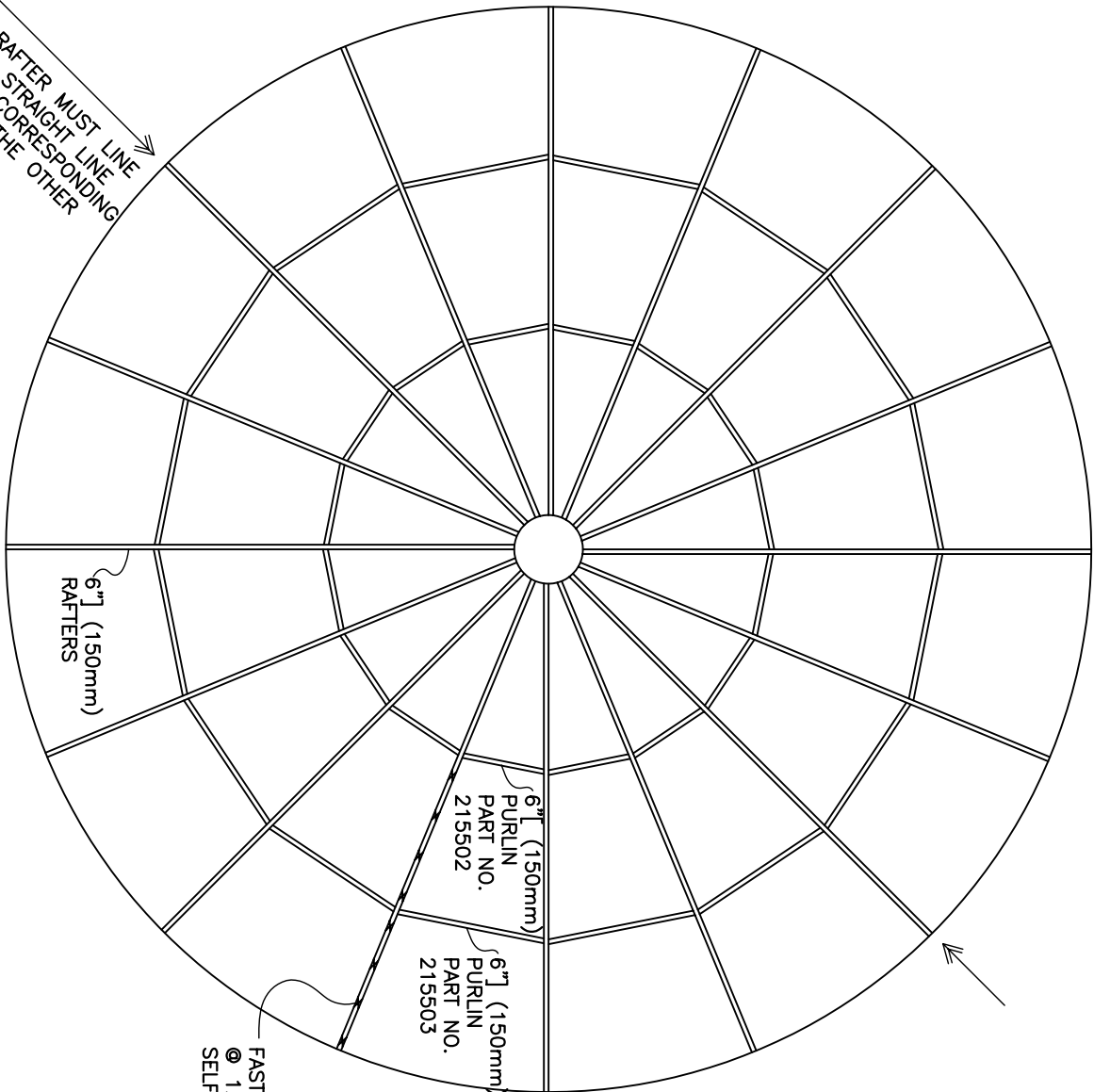


STARTING POINT FOR BOLT PATTERN. RUN COUNTERCLOCKWISE
SEE DETAIL ①

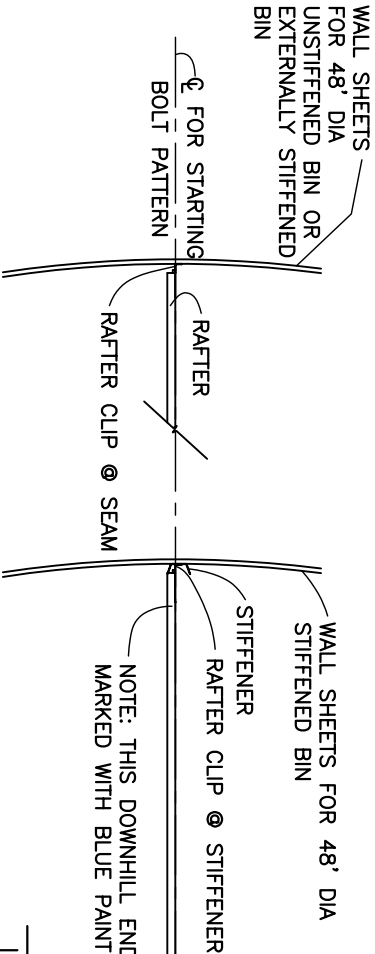
IT MAY BE WISE TO PLACE ONLY 10 BOLTS PER WALL SHEET (VERTICAL SEAMS ON TOP 2 RINGS ONLY), FINGER TIGHTEN, BEFORE MOUNTING RAFTERS. WHEN MOUNTING RAFTERS, ALL RAFTERS, PURLINS AND CLIPS SHOULD REMAIN LOOSE UNTIL ALL ARE IN PLACE. WITH EVERYTHING PROPERLY INSTALLED, ADD REMAINING BOLTS TO WALL SHEETS AND TIGHTEN ALL BOLTS.



ROOF FRAMING PLAN

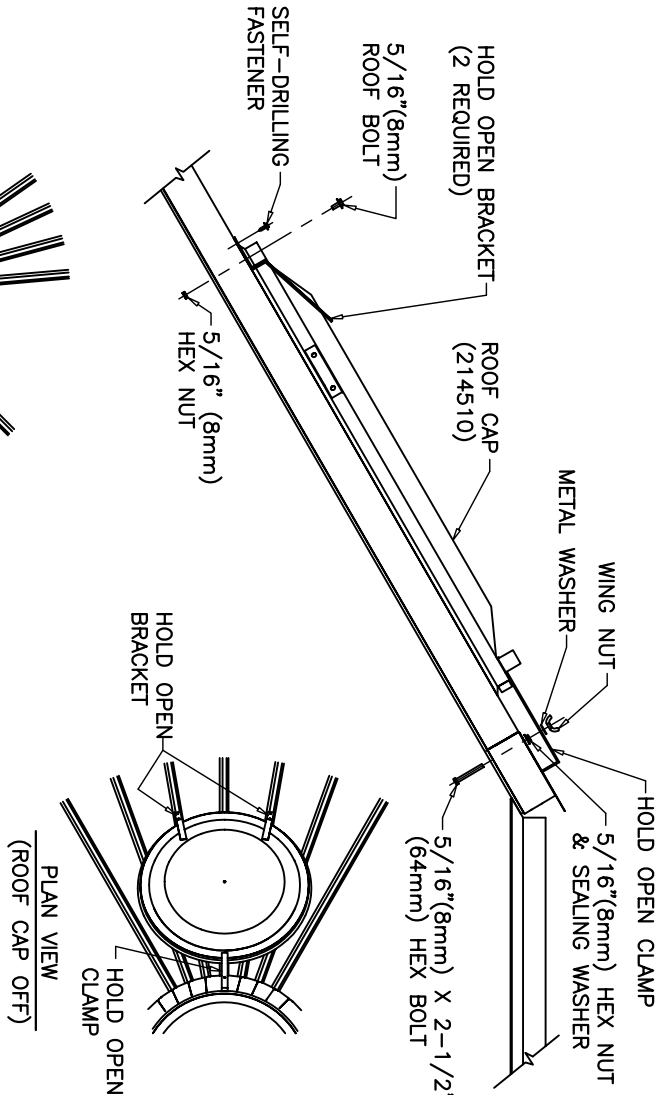
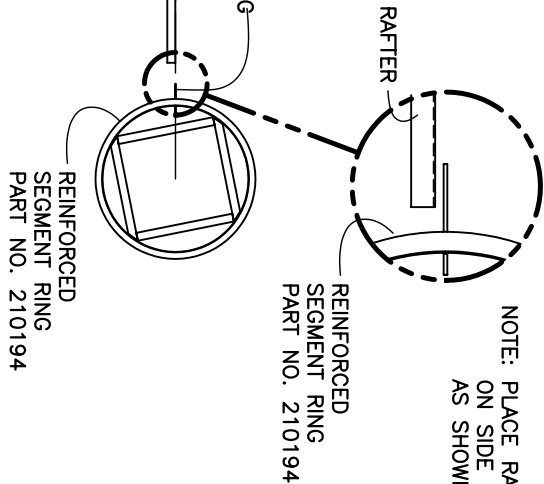
48' (14.63m) DIA ROOF

****NOTE: DO NOT TIGHTEN BOLTS UNTIL ALL RAFTERS AND PURLINS HAVE BEEN INSTALLED****



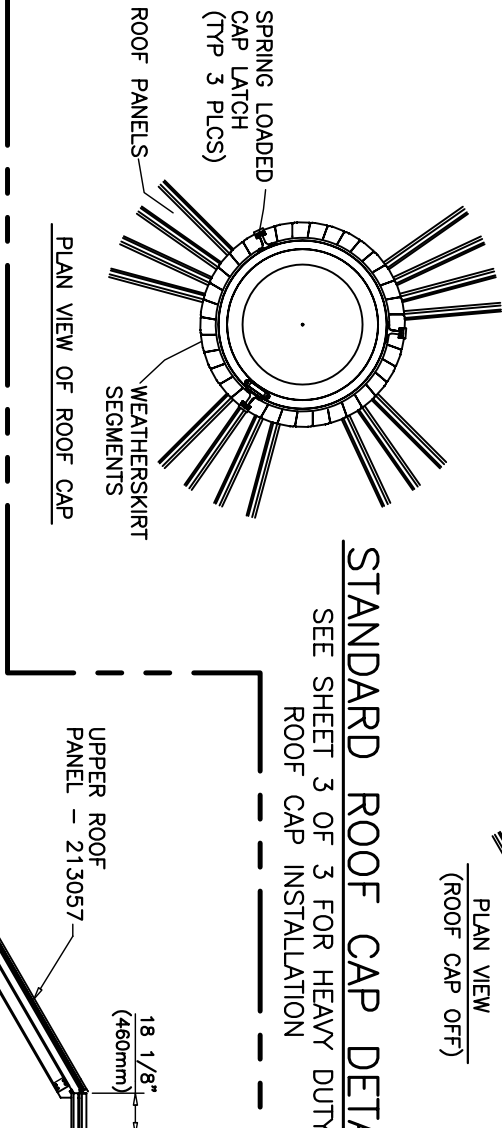
DETAIL ①

LINE UP OF BOLT PATTERN




STANDARD ROOF CAP DETAILS

SEE SHEET 3 OF 3 FOR HEAVY DUTY ROOF CAP INSTALLATION



J	JSD	7/19/02	SEE SHEET 3 FOR REVISION	JSD	7/19/02	SEE SHEET 3 FOR REVISION	
H	JSD	10/23/01	SEE SHEET 3 FOR REVISION	G	JSD	9/9/01	REPLACE RAFTER ORIENTATION
G	JSD	9/9/01	REPLACE RAFTER ORIENTATION	F	KY	10/19/01	SEE SHEETS 2 & 3 FOR REVISIONS
E	SP	06/31/01	ADDED TITLE "STANDARD ROOF CAP DETAILS"	D	DJM	06/17/01	UPDATED RAFTERS AND PURLINS
D	DJM	06/17/01	UPDATED RAFTERS AND PURLINS	C	JSD	10/26/01	UPDATED RAFTERS AND PURLINS
B	CAH	7/17/01	SEE SHEETS 2 & 3 FOR REVISIONS	A	DJM	6/9/01	SEE SHEETS 2 & 3 FOR REVISIONS
A	DJM	6/9/01	SEE SHEETS 2 & 3 FOR REVISIONS	REV	BY	DATE	DESCRIPTION OF CHANGE
J	JSD	15NOV07	SCALE: 1/4" = 1'-0"	J	JSD	15NOV07	SCALE: 1/4" = 1'-0"



SCAPECO
Sculco Civil Systems Company
6200 E. Main Avenue
Spokane, WA 99212-1512, USA
Tel. 509-325-1517 • Fax: 509-325-0170
sculco@scapco.com • www.sculco.com

48" DIAMETER BIN

ROOF ERECTION INSTRUCTIONS FOR TWO-STAGE ROOF

DRAWN	BY	DRAWING NO.	REV.
DJM	BT	14NOV07	J

48ROOF

(4) 3/8" X 1"
(10 X 25 mm) GR 8.2 BOLTS
W/ 3/8" (10 mm)
NUTS & FLAT WASHERS

LOWER ROOF
PANEL #213058

RAFTER
(THIS DOWNHILL
END MARKED
WITH BLUE PAINT)

RIB CLIP
#214520

4 11/16"

(3 3/8" X 1 1/2" (10 X 38mm))
HEX BOLTS GR 8.2 W/N.W.
& 3/8" (10mm) HEX NUTS

RAFTER TO BIN WALL CLIP
PART NO. 214715

TOP STIFFENER

Q OF NORMAL STIFFENER HOLE

(6) 3/8" X 1 1/2"(10 X 38mm)
GR 8.2 HEX BOLT W/N.W. &
3/8"(10mm) NUT-CONNECT Ⓢ
VERTICAL SEAM TOP (6) HOLES
INSIDE CORRUGATION
(FIRST ROW OF BOLTS)

UNSTIFFENED BINS

(RAFTER CONNECTION DETAILS)

(UNSTIFFENED BINS)

SEGMENT RING
 5/16" x 1 1/4" (8 x 32mm) HEX BOLT W/ NW & NUT (1 REQ'D) PER PANEL
 UPPER ROOF PANEL #213057
 2" x 2" x 10 GA. X 5 1/8" (51 X 51 X 3 X 130mm) ANGLE #215142
 3/8" x 1 1/2" (10 x 38mm) HH BOLT GR 8.2 W/ NW AND NUT (2 REQ'D) (6 PLACES)
 REINFORCED SEGMENT RING #210194
 3/8" x 1" (10 x 25 mm) GR 8.2 BOLT W/ NUT & 3/8" (10 mm) FLAT WASHER ON (2) SIDES (2 PLACES) TYP.

DETAIL ③
 ROOF PANEL AND RAFTER TO SEGMENT AND REINFORCED SEGMENT RINGS
 6" (150mm) [RAFTER (TYP.)]
 6" (150mm) [PURLIN]
 TOP OF PURLIN AND RAFTER TO BE FLUSH
 CONNECTION POINTS
 PURLIN TO RAFTER CLIP #214532
 PURLIN CONNECTION BETWEEN RAFTERS

RAFTER SECTION
 UPPER TO LOWER ROOF
 5/16" x 1 1/4" (8 x 32 mm) HEX HEAD BOLTS GR 8.2
 RIB CLIP #214520
 13-5/16" FROM LOWER END OF RAFTER
 3/8" x 1" (10 x 25 mm) GR 8.2 BOLT W/ NUT & 3/8" (10 mm) FLAT WASHER
 TRANSITION STRIP MOUNTING BRACKET (215534) TO RAFTER (215291) (TYP. 16 PLACES)
 3/8" x 1" (10 x 25 mm) GR 8.2 BOLT W/ NUT (4 PLACES)

DETAIL ⑤
 LOWER ROOF PANEL #213058
 (4) 3/8" x 1" (10 x 25 mm) GR 8.2 BOLTS W/ 3/8" (10 mm) NUTS & FLAT WASHERS
 RIB CLIP #214520
 RAFTER (THIS DOWNHILL END MARKED WITH BLUE PAINT)
 RAFTER TO BIN WALL CLIP PART NO. 214715
 TOP EXTERNAL STIFFENER
 TOP WALL SHEET

DETAIL ④
 CLIP PART NO. 214532
 3/8" DIA X 1" (10 x 25mm) GR 8.2 BOLTS W/ NUTS & 3/8" DIA (10 mm) FLAT WASHER ON (2) SIDES
 6" (150mm)] RAFTER
 PURLIN
 GIRT TO RAFTER CLIP

DETAIL ⑦
 3/8" x 1 1/2" (10 x 38) HEX HEAD BOLT W/ NW #290160
 3/8" FLAT WASHER #290013
 TOP EXTERNAL STIFFENER
 RAFTER TO STIFFENER CLIP #214715
 3/8" SEALING WASHER #290042
 3/8" HEX NUT #290014
 TOP WALL SHEET
 RAFTER TO BIN WALL CLIP #214715

DETAIL ⑥
 NOTE: PLACE RAFTER CHANNEL ON SIDE OF CLIP AS SHOWN

DETAIL ⑦
 (3) 3/8" x 1 1/2" (10 x 38mm) HEX BOLTS GR 8.2 W/ N.W. & 3/8" (10mm) HEX NUTS
 TOP EXTERNAL STIFFENER

ROOF PANEL AND RAFTER TO SEGMENT AND REINFORCED SEGMENT RINGS

Diagram illustrating the Purlin Connection. The diagram shows two purlins being joined. Key components and labels include:

- TOP OF PURLIN AND RAFTER TO BE FLUSH
- 6" (150mm) [PURLIN
- CONNECTION POINTS
- PURLIN TO RAFTER CLIP #214532
- CONNECTION POINTS


215534 - TRANSITION STRIP
MOUNTING BRACKET

RAFTER SECTION

UPPER TO LOWER ROOF

GIRT TO RAFTER CLIP

J	USD	7/1/02	SEE SHEET 3 FOR REVISION
H	USD	6/9/01	SEE SHEET 3 FOR REVISION
G	USD	5/20/01	REUSE PATTERN ORIENTATION
F	KY	10/19/00	NO CPZ #14800 WAS STRUCK NO CPZ #14002
E	SP	9/31/00	SEE SHEETS 1 & 3 FOR REVISION
D	DLM	10/26/99	UPDATED BATTERS AND PARLINS
C	USD	10/26/99	UPDATED BATTERS AND PARLINS
B	CAH	7/17/98	16 TRMS. STRIPS WMS 18
A	DLM	6/8/98	3/4" SO. WAS 1"
REV	BY	DATE	DESCRIPTION OF CHANGE



SCAFECO.

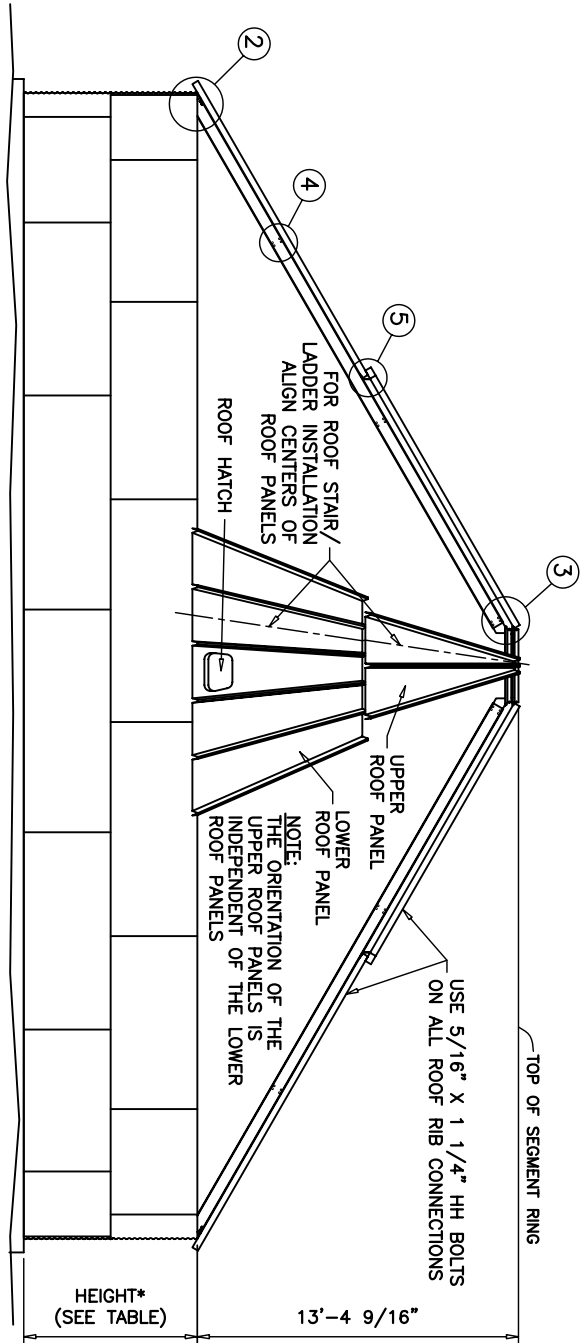
6200 E. Main Avenue
Spokane, WA 99211-1215, USA
Tel: 509-535-1211 Fax: 509-535-8120
sales@scafeco.com * www.scafeco.com

ALL DIMENSIONS IN FEET - EXCEPTED - FINISH 3/4" IF "FINISH 3/4" SPEC'D ON ORDER

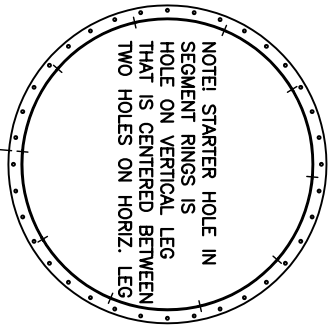
48" DIAMETER BIN

ROOF ERECTION INSTRUCTIONS FOR TWO-STAGE ROOF

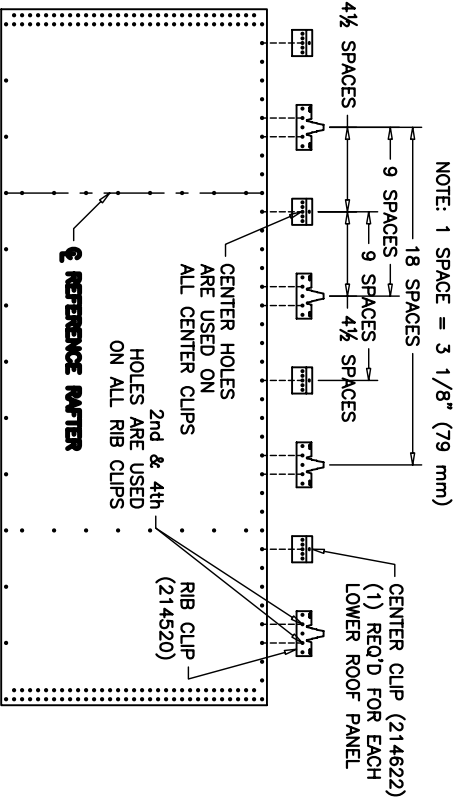
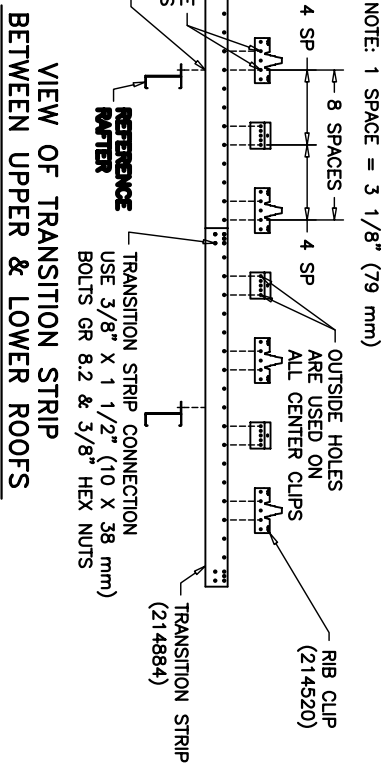
REV	BY	DATE	DRAWING NO.
	DLM	11/ANOV97	48R00F
APPROVED	JT	11/ANOV97	SHEET 1 OF 3
CHECKED			J



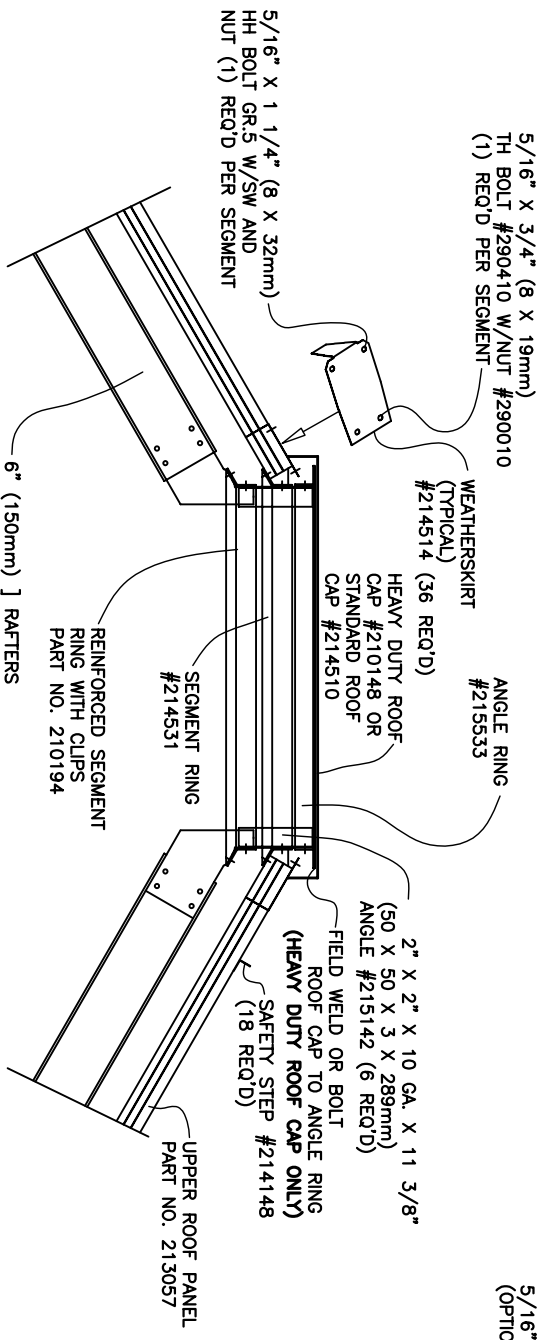
STARTING WALL SHEET HEIGHT			
TOP STIFFENER	TOP SHEET	*HEIGHT	
32" [813]	42 2/3" [1084]	44 5/16" [1125]	
42 5/8" [1083]	10 2/3" [271]	54 15/16" [1396]	
53 1/8" [1349]	21 1/3" [542]	65 5/8" [1667]	
74 5/8" [1895]	42 2/3" [1084]	86 15/16" [2209]	



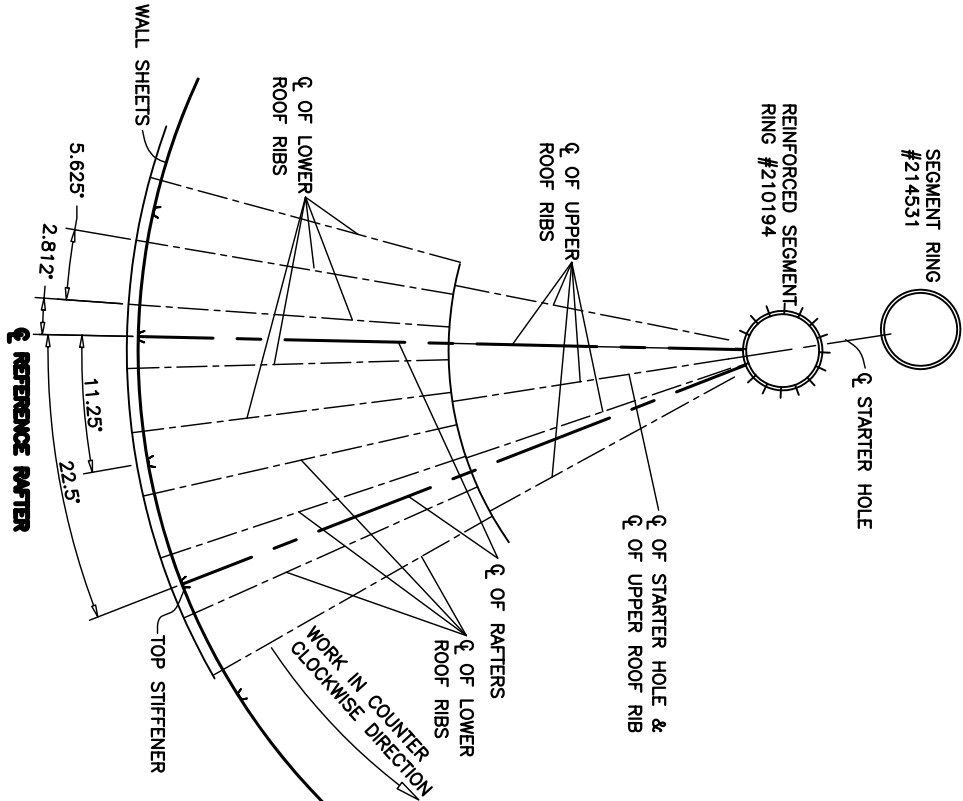
Φ STARTER HOLE IN SEGMENT RING AND REINFORCED SEGMENT RING



VIEW SHOWING CENTER & RIB CLIP CONNECTION TO TOP WALL SHEET



SECTION THROUGH ROOF CAP



RIB/CENTER CLIP DETAIL

NOTE: SCAFCO RECOMMENDS AN EXPANSION JOINT IN THE SPOUTING OR A SLIP/SHEAR CONNECTION TO THE ROOF CAP DUE TO THE POSSIBILITY OF THE FOLLOWING:
- SETTLEMENT OF THE SILC;
- SETTLEMENT OF THE FOUNDATION;
- MOVEMENT OF THE SPOUTING.

J	JSD	7/12/02	UPDATE NOTES, TITLE	
H	JSD	10/23/01	ADD PART #S 214514, 200410, 200010, 214148	
G	JSD	9/9/01	REMOVE RAFTER ORIENTATION	
F	KY	10/19/01	AMEND RIB CAP CALOUT IN TRANSITION STRIP DETAIL	
E	SP	06/3/00	UPDATED ROOF CAP DETAIL	
D	DJM	06/17/00	UPDATED RAFTERS AND PARLUS	
C	JSD	10/27/01	UPGRADE RAFTERS, PARLUS & ROOF PANELS	
B	CAH	7/16/98	5/16" X 1 1/4" WAS 5/16" X 1"	
A	DJM	6/9/98	5/16" X 1 1/4" WAS 5/16" X 1"	
REV	BY	DATE	DESCRIPTION OF CHANGE	
APPROVED: JT 15NOV97 SCALE 1/4" = 1'-0" SHEET 3 OF 3				

SCAFCO		SCAFCO Global Systems Company	
8200 E. Main Avenue		Spokane, WA 99211-1315, USA	
Tel: 509-325-1371 • Fax: 509-325-9130 • info@scafcocom • www.scafcocom		© 2002 SCAFCO	

48" DIAMETER BIN		ROOF ERECTION INSTRUCTIONS FOR TWO-STAGE ROOF	
REV	DATE	DRAWING NO.	
		48R00F	